

# Alaska Parking Lot

S 188th Street  
SeaTac, WA 98158

## Tenant Lease Information

Property	Total Parcel Size	Expiration Date	Renewal Options	Extensions Available	Extensions Length
Lease #	Square Footage				
#001300	27,714 sq. ft.	09/30/2014			

## Tenant General Information

Current Use:	Parking Ground Lease
Location:	South of the Airfield
City:	SeaTac

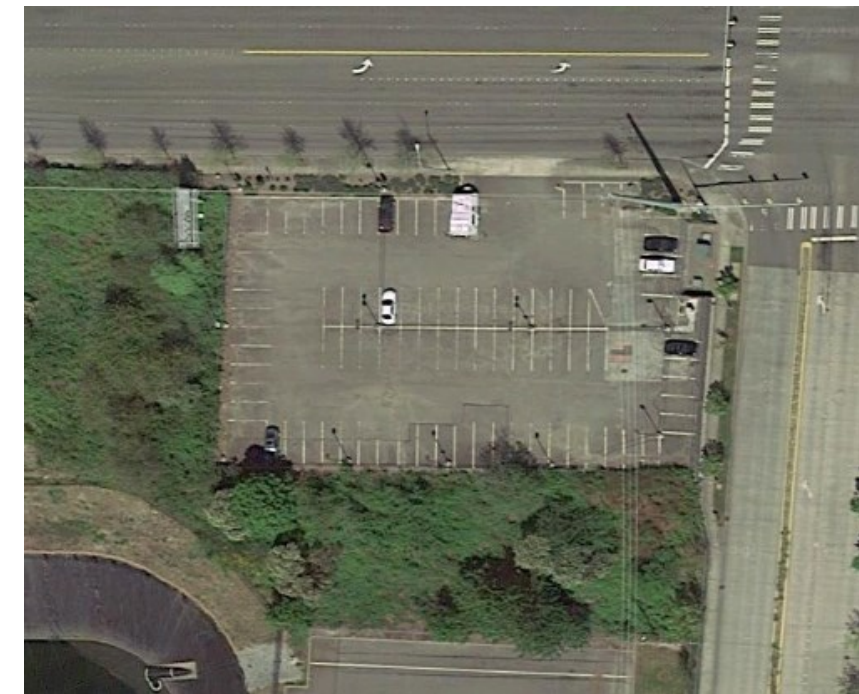
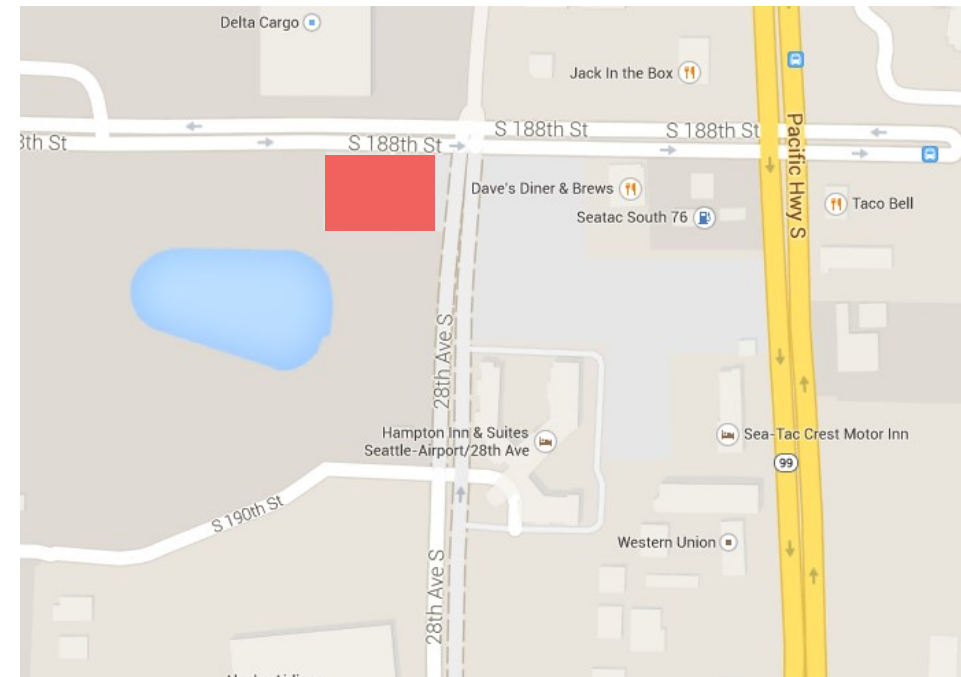
## King County Parcel #'s

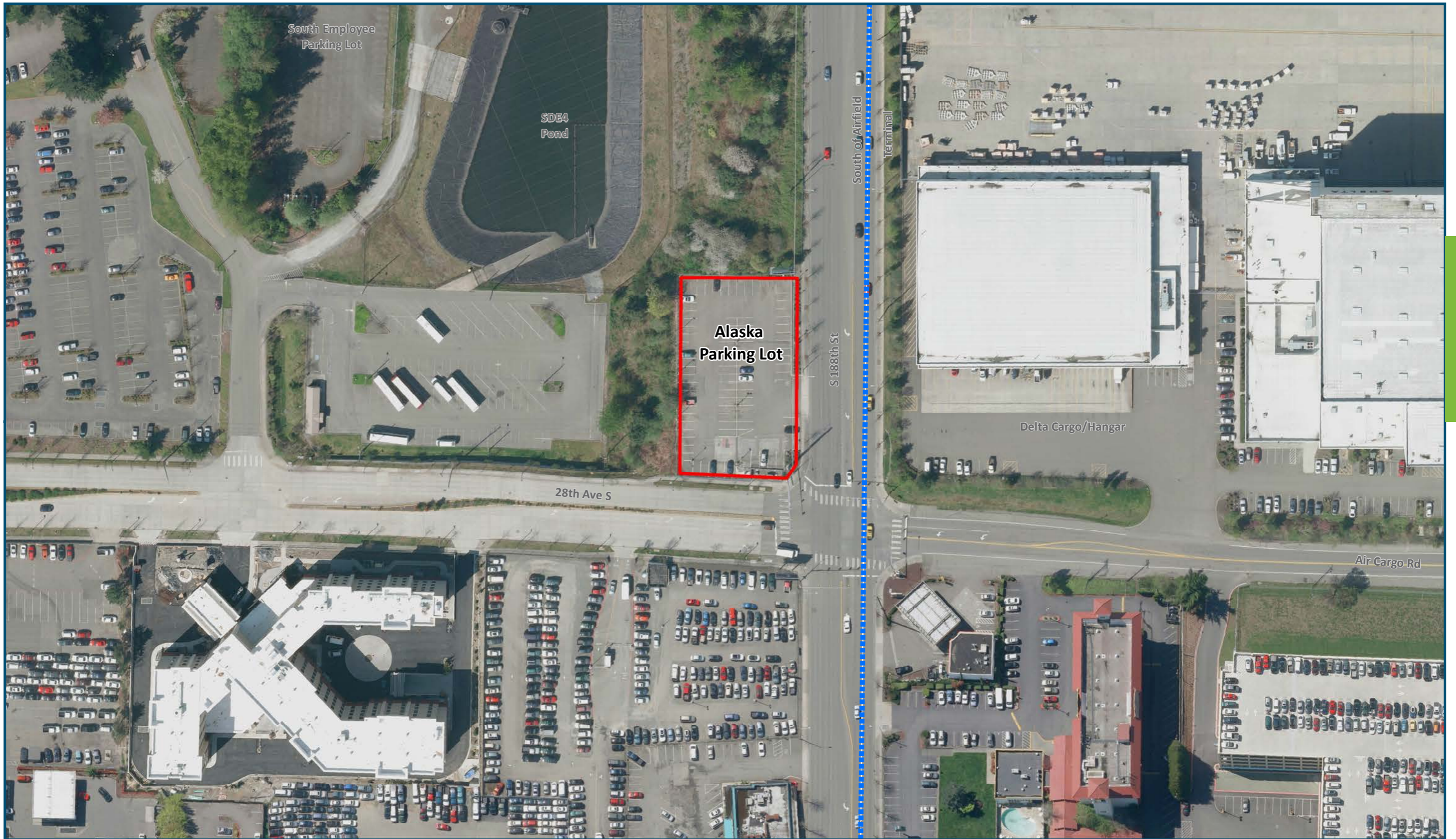
#2823049016
-------------

## Restrictions of Use—Based on Funding

Bonds	Airport Improvement Project Fund (AIP)
Please Call for Details	Please Call for Details

Before modifying use of property assess bonds restrictions by contacting Corporate Finance & Budget.  
Access AIP's by contacting Airport Finance & Budget.



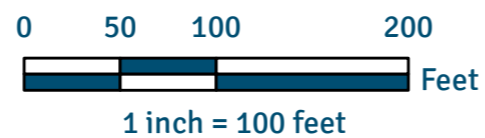


South of Airfield

# Alaska Parking Lot Lease #001300

Date Published: 12-31-2014

Disclaimer: This map is for general reference only. Data Layers that appear on this map may or may not be accurate, current, or otherwise reliable. THIS MAP IS NOT TO BE USED FOR NAVIGATION.



 Zone Matchline Boundary  
 Port of Seattle Lease Boundary

Aerial Photo Taken Spring 2012